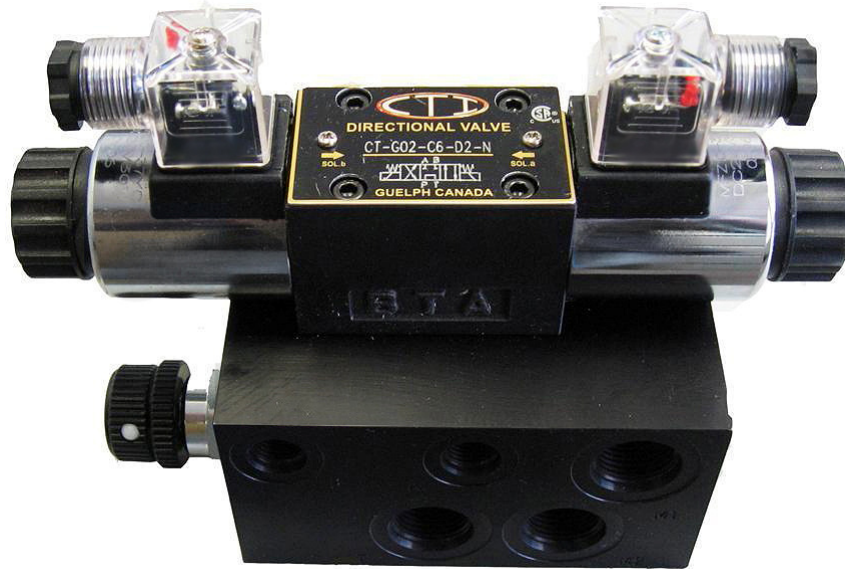


# Skid Steer Attachment Manifold



## Description

An integrated circuit designed for skid steer loader attachments that utilize a hydraulic motor as a prime mover and have a secondary function such as a cylinder.

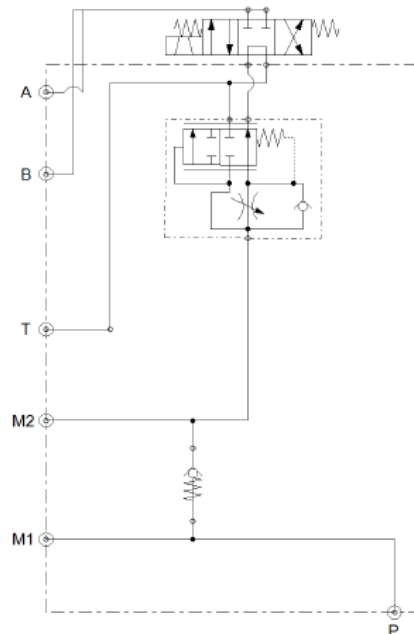
## Application Examples

- sweepers
- stump grinders
- snow blowers

## Ratings

Operating Pressure: 3500 psi

Maximum Flow: 40 gpm



Control Technologies International Limited  
(519) 823-4466 [www.c-t-i.ca](http://www.c-t-i.ca)