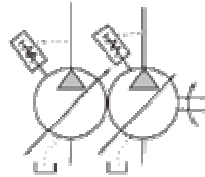


# DOUBLE VARIABLE DISPLACEMENT VANE PUMP



VP-DF-20/30



HOW TO ORDER:

**VP – DF – 30 – B – 10**

10: Square casting  
20: Round casting  
30: Aluminum casting

Pressure range  
A: 115-285  
B: 215-500  
C: 425-785  
D: 715- 1000  
E: 1000-1500

Displacement

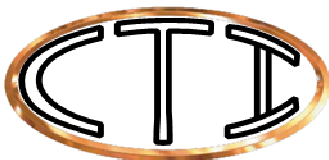
Mounting Type  
SF: SAE 2 bolt  
DF: 4 bolt

Series number

## Double Variable Displacement Vane Pump

### Features:

1. Quite operation, even at full pressure.
2. Flow and pressure can be different, in first and second pump.
3. Simple, compact design.
4. Quick response.



Control Technologies International

519 823 4466

[www.c-t-i.ca](http://www.c-t-i.ca)

**SPECIFICATION:**

MODEL	Delivery at on load gpm		Pressure Range psi	Shaft Speed rpm		Max Pressure psi	Weight lbs Flange
	1800rpm	1500rpm		Max	Min		
VP-DF-12-A	3+3	2.6+2.6	115-285	1800	800	285	20
VP-DF-12-B			215-500			500	20
VP-DF-12-C			425-785			785	20
VP-DF-12-D			1000-1500			1500	20
VP-DF-20-A	5+5	4.5+4.5	115-285	1800	800	285	20
VP-DF-20-B			215-500			500	20
VP-DF-20-C			425-785			785	20
VP-DF-20-D			1000-1500			1500	20
VP-DF-30-A	8+8	6.6+6.6	115-285	1800	800	285	38
VP-DF-30-B			215-500			500	38
VP-DF-30-C			425-785			785	38
VP-DF-30-D			1000-1500			1500	38
VP-DF-40-A	11+11	9.2+9.2	115-285	1800	800	285	38
VP-DF-40-B			215-500			500	38
VP-DF-40-C			425-785			785	38
VP-DF-40-D			1000-1500			1500	38

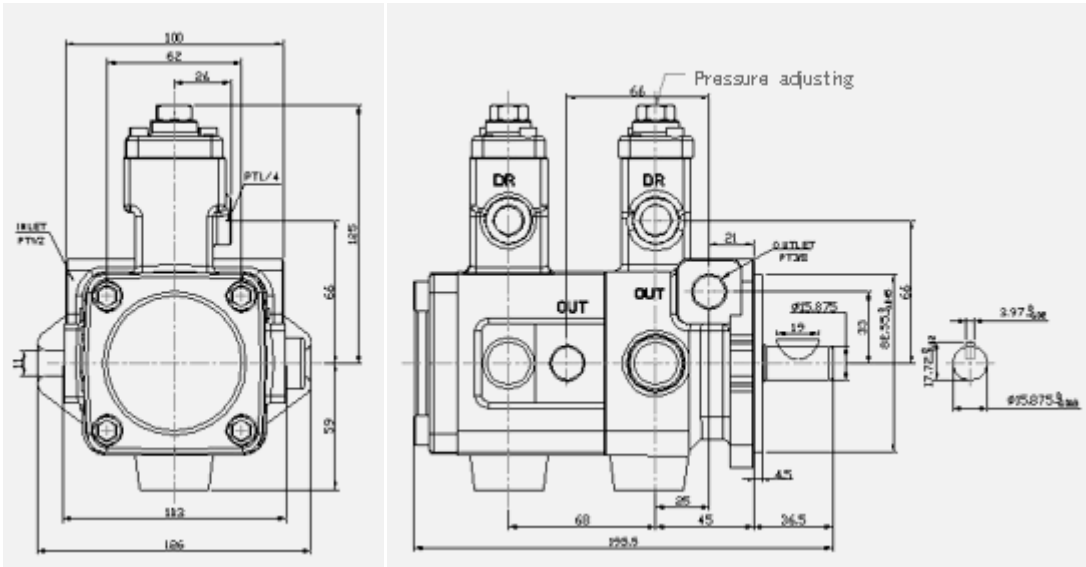


**Control Technologies International**

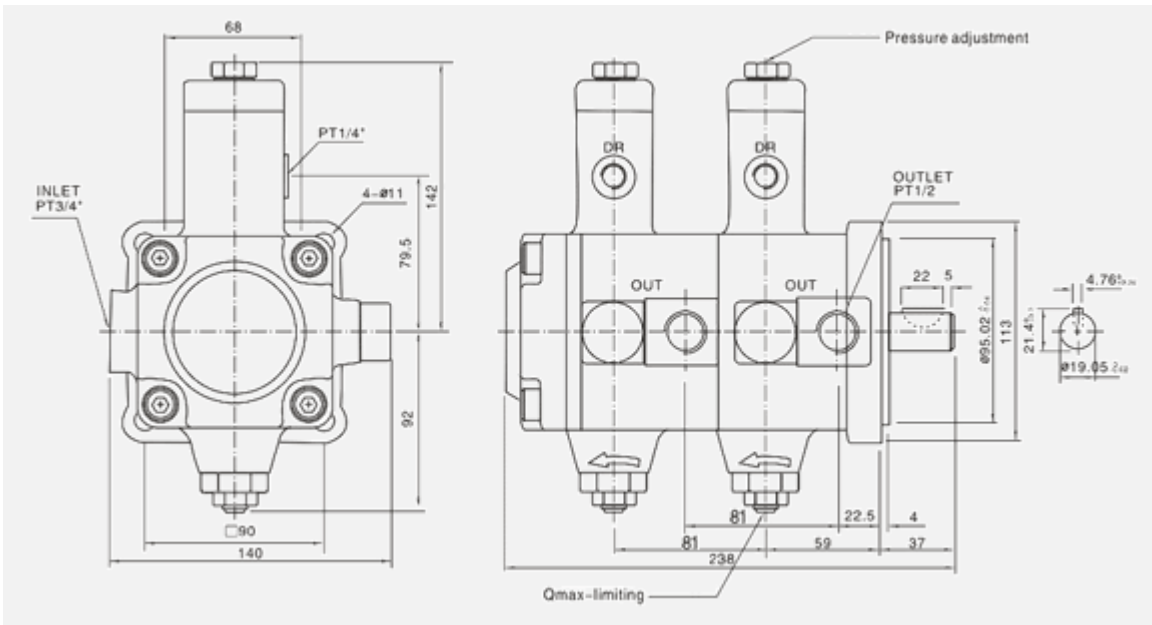
519 823 4466

[www.c-t-i.ca](http://www.c-t-i.ca)

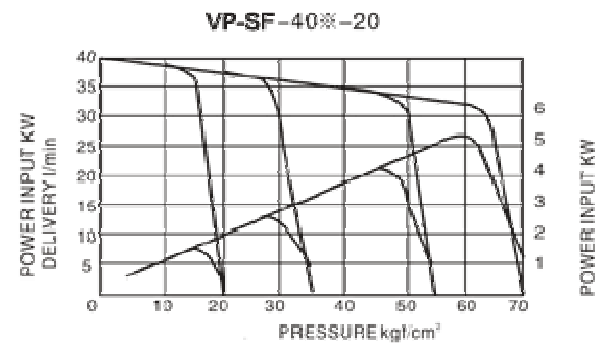
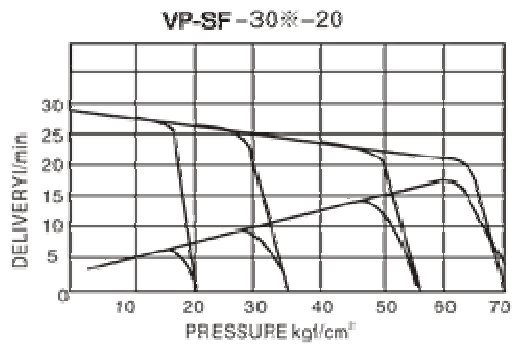
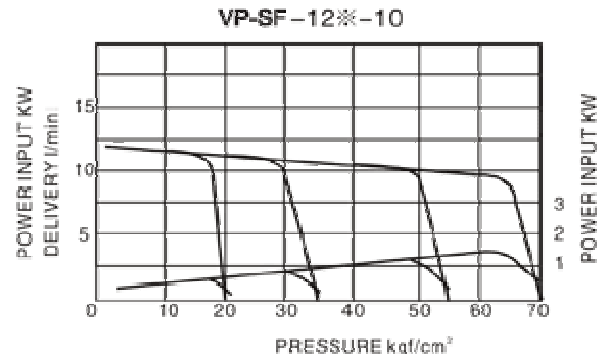
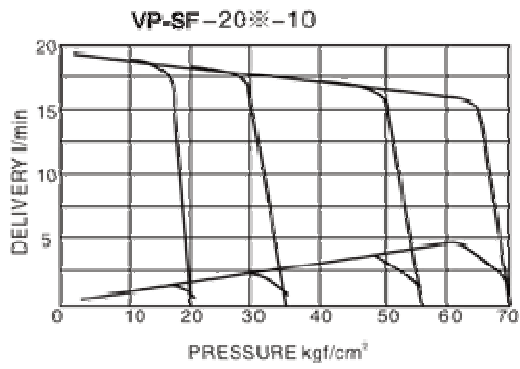
VP-DF-12- ✱  
 VP-DF-20- ✱



VP-DF-30- ✱  
 VP-DF-40- ✱



Control Technologies International  
 519 823 4466  
[www.c-t-i.ca](http://www.c-t-i.ca)



**Control Technologies International**

519 823 4466

[www.c-t-i.ca](http://www.c-t-i.ca)