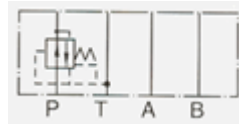


MODULAR SEQUENCE VALVES



MSV

HOW TO ORDER:

MSV-02-P-1

Pressure Adjusting range
 1: 8-70kgf/cm²
 2: 10-210kgf/cm²

Action Form
 P: P Port
 B: B Port
 A: A Port

Valve Size
 02: 1/4"
 03: 3/8"

Series Number

SPECIFICATIONS:

MODLE	MAX.OPERATED PRESSURE psi	PRESSURE ADJ.RANGE psi	MAX.FLOW gpm	WELGHT lbs
MSV-02-P	4500	1: 114-1000 2: 142-3000	10.5	2.5
MSV-03-P	4500	1: 114-1000 2: 142-3000	21	9

- MSV-02

